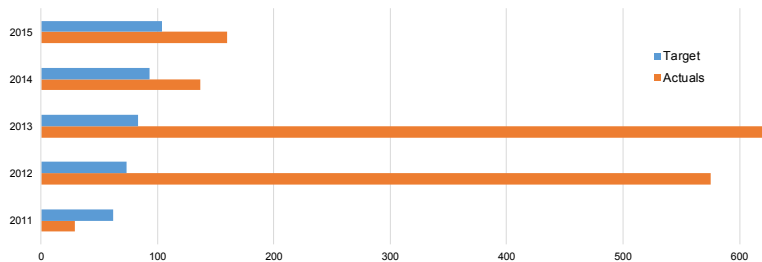


# CAMP PROPERTY DATA

BENCHMARKS: Ma Kee Wa

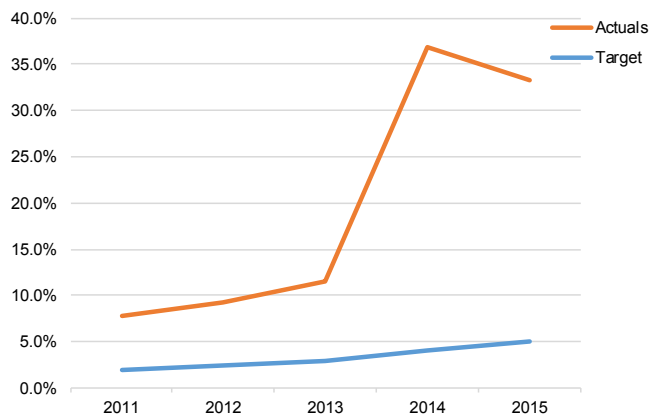
## NUMBER OF DAYS USED



	2011	2012	2013	2014	2015
<b>Target</b>	62	73	83	93	104
<b>Actuals</b>	29	575	623	137	160
<b>Met</b>	✗	✓	✓	✓	✓

**Intent of the Benchmark:** Properties are being used on a regular basis to deliver the Guiding program.

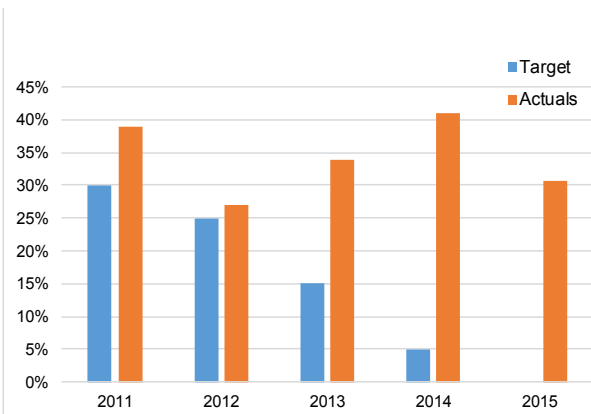
## PERCENTAGE OF GIRL MEMBERSHIP



	2011	2012	2013	2014	2015
<b>Target</b>	2%	2.5%	3%	4%	5%
<b>Actuals</b>	7.8%	9.2%	11.5%	36.9%	33.2%
<b>Met</b>	✓	✓	✓	✓	✓

**Intent of the Benchmark:** That properties primary focus is to attract and deliver camping opportunities for the girl members of the organization.

## Overall Deficit Reduction Targets



	2011	2012	2013	2014	2015
<b>Target</b>	30%	25%	15%	5%	0%
<b>Actuals</b>	39%	27%	34%	41%	31%
<b>Met</b>	✗	✗	✗	✗	✗

Does not include depreciation.

**Intent of the Benchmark:** That users of the property are financially sustaining the operations of that property.

	2015 Actual	2014 Actual	2013 Actual	2012 Actual	2011 Actual
<b>Actuals</b>	(55,220)	(71,012)	(61,753)	(58,677)	(80,394)

Includes depreciation.