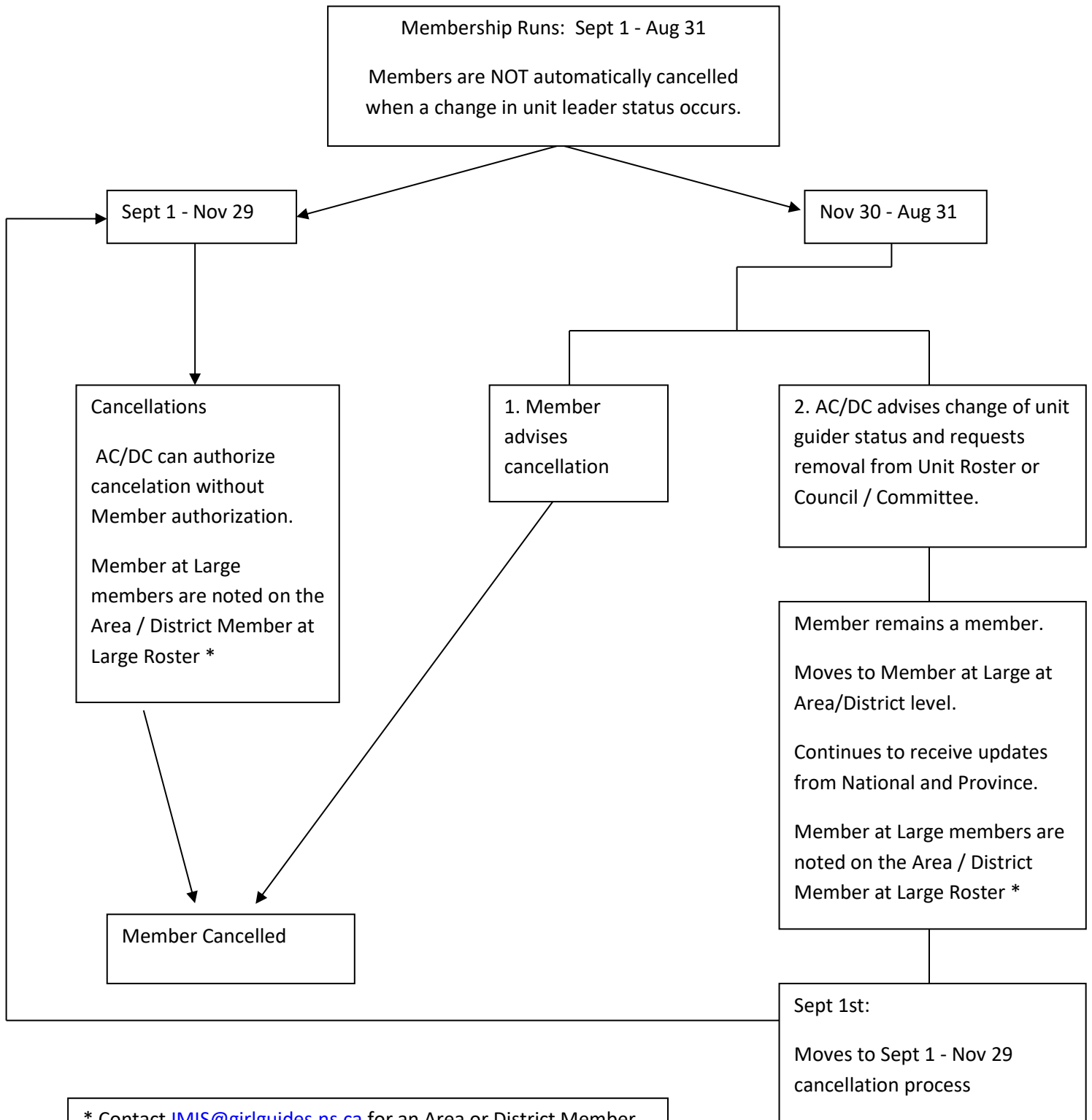


MEMBER TRANSFER CANCELLATION PROCESS

To ensure members continue to enjoy the benefits of membership while addressing the need to have Unit Rosters accurate for current leaders, the following Member transfer / cancellation process was developed.

Please note: National can cancel a member at any time with due cause.



* Contact IMIS@girlguides.ns.ca for an Area or District Member at Large Rosters.